

Barco and ATI, improving healthcare imaging

Image data sets grow and applications adapt

Driven by a demand for increased diagnostic quality of medical images, advances in medical scanner technology have resulted in the rapid expansion of medical image complexity and size. The challenge is how to present this volume of data in a format radiologists can review and diagnose quickly.

Aiming at increased radiologist productivity, medical software applications have incorporated high-speed 2D imaging, 3D graphical reconstruction, 3D volume rendering and the increased use of color. To achieve this, medical applications increasingly rely upon the features of OpenGL 2.0 or Microsoft DirectX 9.0. These standard interfaces spread the performance load to high-powered GPUs (Graphics Processing Units) and graphics accelerators.

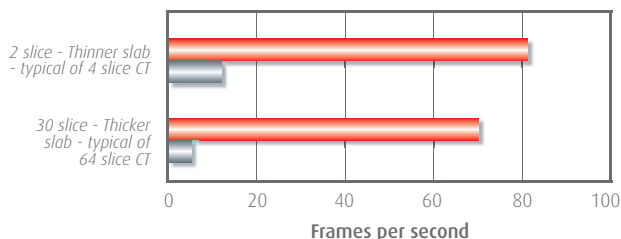


Solutions dedicated for the healthcare market

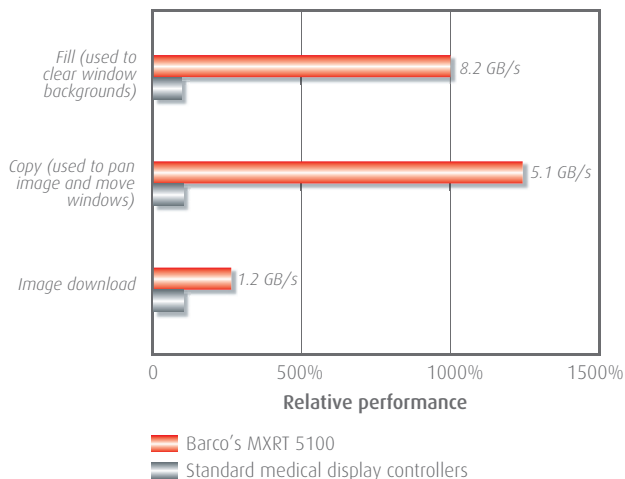
Bringing the power of high-speed graphical processing to the medical imaging environment is the goal of a technology cooperation agreement between ATI and Barco. ATI is a world leader in the design and manufacture of innovative 3D graphics acceleration technology. ATI leads the technology innovation for the CAD/ CAM and digital content creation markets. Barco is leveraging this powerful graphics technology from volume markets to create a lowest cost of ownership system for the medical imaging market.

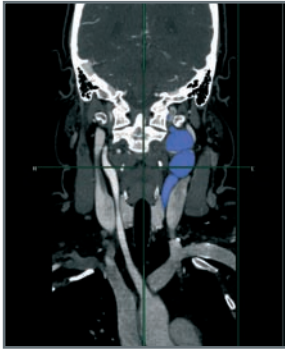
The technology agreement between ATI and Barco provides Barco with unique access to adapt 2D and 3D ATI graphics accelerators. Barco will provide specific support for 3D enabled medical software applications through dedicated driver solutions that make medical applications run faster and more efficiently. Barco has the unique capability to optimize the ATI accelerators for medical imaging applications.

3D - CT Cine speed benchmark



2D - Image manipulation speed benchmark





Color enhanced grayscale modality



Color modality

Medical imaging, powered by ATI

Barco's proven display technology, combined with ATI's industry leading FireGL workstation graphics accelerators, provides an exceptional solution for the latest PACS and modality applications. Applying its experience with medical application requirements, Barco provides support for various medical palette modes. Color and grayscale images can be rendered while maximizing the effective shades of color and gray.

Larger image data sets and color rendering demand the full bandwidth performance provided by the ATI FireGL native PCI Express x16 graphics accelerators. The ATI/Barco solution pairs the best workstation-class graphics accelerator with a display calibrated to match radiologists' PACS visualization and workflow needs.

Barco builds upon the ATI technology by:

- optimizing the ATI graphics accelerators for advanced 2D and 3D medical visualization
- providing DICOM-compliance by supporting up to 1024 simultaneous shades of gray and up to 30-bit color
- assuring seamless PACS compatibility through continued support of medical imaging standards such as static gray palette modes
- supporting multi-head diagnostic portrait resolutions up to 5 megapixel
- ensuring compatibility with MEDICAL QAWEB software for device and fleet QA management.

Microsoft, DirectX and Windows are trademarks of Microsoft Inc. OpenGL is a registered trademark of SGI. FireGL is a registered trademark of ATI Technologies Inc. PCI Express is a registered trademark of PCI-SIG

Barco (Belgium)

Pres. Kennedypark 35
B-8500 Kortrijk
Belgium

Phone: +32 56 233 244

Fax: +32 56 233 374

E-mail: sales.medical.eu@barco.com

BarcoView, LLC (USA)

3059 Premiere Parkway

Duluth Georgia, 30097-4905, USA

Phone: +1 678 475 8000

Fax: +1 678 475 8100

E-mail: sales.medical.us@barco.com

Barco LTD. (Taiwan)

17th floor, Kuohwa Building

868-6, Chungcheng Road

Chungho City, Taipei County, 235, Taiwan

Phone: +886 2 8221 6868

Fax: +886 2 8221 6969

Barco Ltd. (South Korea)

3F, Dansan-Nonhyun Building, 216-8 Nonhyun-dong

Kangnam-ku, Seoul 135-010,
South Korea

Phone +82 2 3445 8900

Fax +82 2 3445 8737

Barco nv, Rep. Office Shanghai (China)

7F, Fen Yang Road 138

Shanghai PRC 200120, China

Phone +86 21 5465 5501

Fax +86 21 5465 5502

Barco Pte. Ltd. (Singapore)

Block 750E, Chai Chee Road

05-03 Technopark@Chai Chee

Singapore 469005

Tel. +65-6243.7610

Fax +65-6443.9874 or +65-6441.7926

Barco Systems Pty. Ltd. (Australia)

2 Rocklea Drive,

Port Melbourne, Vic 3207 Australia

Phone +61 3 9646 5833

Fax +61 3 9646 5887

M-H-ATI-1105

Technical specifications are subject to change without prior notice

www.barcomedical.com

